

tells the story of the Montrose people and the art gallery within the museum hosts changing exhibition from the community and Angus Council's collections of paintings and sculptures. The museum also has afternoon talks, children's activities and occasional evening events. It is open Tues – Sat from 10am to 5pm.

**Cost:** Entrance is free of charge.

#### **William Lamb Studio**

**Contact:** 01674 662660 (Montrose Museum)  
MontroseMuseum@angusalive.scot

**Location:** Market street, Montrose

**Overview:** William Lamb was an artist and sculptor born in Montrose. He designed the studio and it houses a collection of his sculptures, prints and drawings. The studio is open to the public only during July and August. During these months it is open Tues – Sat from 2pm to 5pm.

**Cost:** Entrance is free of charge.

#### **Brechin Town House Museum**

**Contact:** 01356 627458

**Location:** High Street, Brechin

BrechinMuseum@angusalive.scot

**Overview:** Brechin Town House Museum is located within the old municipal building, constructed around 1789-90, in the centre of Brechin. The museum contains local history exhibitions, works by local artist David Waterson and a model of Brechin as it was in the 1820s. It gives visitors the chance to explore the history of the town and its people, with a collection of objects, photographs, archival material and ephemera. It is open Tues – Sat from 10am to 5pm.

**Cost:** Entrance is free of charge.

### *Youth and Children's Facilities*

There are a number of soft plays in the surrounding area though only one is found in Arbroath but publicly available information on this facility is very limited.

#### **Showcase the Street – Dance School**

**Contact:** 01241 434398

**Location:** Lindsay St., Arbroath/Dundee

Showcase the Street is a local charity dance school providing dance classes in Hip Hop, Street dance, Break dance, Contemporary, Modern, Tap and Zumba for ages 3 years to adults. Classes are held in areas throughout Angus as well as in Aberdeenshire and Perth and Kinross. Showcase the Street has a larger facility in Dundee, which comprises of 2 dance studios, 2 indoor 3G sport surfaces, a reception area with coffee and snack bar and rooms for conferences or small meetings. In addition to dance classes, a theatre school, Singing Sensations Choir project, and dance and football holiday programmes are run from the Dundee centre.

The charity is also involved in the construction of the purpose built leisure centre that is to be built at Seaton Park.

#### **Jumping Joeys**

**Contact:** 01241 431000

**Location:** Queens Drive, Arbroath

Jumping Joeys is a children's soft play with slides, ball pit and car track. It also has a café and restaurant and parking on site. Opening hours are M-Thu 10am to 4pm and Fri – Sun 10am to 6pm.

Jumping Joeys does not have a website with entry prices.



**Cheeky Monkeys Montrose****Contact:** 01674 673397**Location:** George Street, Montrose

Cheeky Monkeys is an indoor play centre comprised of a large play frame with sides, ball pits, air cannon, swing ball, trampoline, rock wall, sports court, battle zone, rope bridge and lots more including exciting new laser-tag. There is also a baby area as well as a sensory room. The facility can be booked for children's parties and there is a café. Entry prices not listed on the website.

**Frostys Funhouse****Contact:** 01307 469097**Location:** Suttieside Road, Forfar

Frostys Funhouse is an ice themed play centre for children. It has a multi-level adventure main frame with a four lane ice slide, football and basketball area, rapid fire cannons, ball juggler, ball pit, toddlers' race track and separate toddler's area. Birthday parties can be hosted there and there is a café. For a 2 hour session, prices are £2 for children under 1 year, £4.50 for ages 1-3 years and £5 for ages 4-11 years.

**The Fun Factory****Contact:** 01382 501725 (Douglas)**Location:** Camperdown/Douglas, Dundee

01382 828230 (Camperdown)

info@funfactorydundee.com

The Fun Factory is a soft play for babies and children up to the age of 11. They have two locations, one on Camperdown Road in Dundee and the other in Douglas. Both facilities have Dizzy Disc's, Rope Bridges, a 3 tier softplay structure, a baby and toddlers area and within the Douglas building a sensory room. There is a café for the children and parents and children's party packages are offered at both facilities. They are open from 10am to 6pm Monday to Friday. Weekday prices are Free for under 6 months, £1.00 for ages 6 months to under 1 year, £3.50 for ages 1 to 4 years and £4 for ages 5+. At the weekend and during school holidays the price is £4.25 for ages 1 to 4 and £4.75 for ages 5+. The sensory room is £2/hour for each child.

**Factory Skatepark****Contact:** 01382 509 586**Location:** Balunie Drive, Dundee

info@factoryskatepark.com

The Skatepark is open Monday to Sunday from 10am to 10pm. There are dedicated beginner sessions and private sessions at certain times, but is mainly mixed. Session prices for non-members are £4.50 for 1 hour, £8 for 2 hours and £12 for 3 hours. Memberships are £30/annum and for members it is £3.50 for 1 hour, £6 for 2 hours and £9 for 3 hours. There are also options for day passes and multi-session packages. The skatepark also has a youth club and a café. The youth club does a range of activities which in the past have included graffiti workshops, video production, magic & circus skills, adventure clubs, mixed martial arts, digital music etc. A homework club also meets Mon - Wed 4:30 to 6pm.

**Kidz World****Contact:** 01382 816888**Location:** Old Glamys Road, Dundee

Kidz World offers soft play parties and nerf parties for children. Soft play parties for 12 kids cost £72 Monday - Thursday and £92 Friday - Sunday. Private parties are £132. Kidz World also has a separate function suite that can be hired out for events and parties. They are a hosting facility for soccerworld which includes 5-a-side and 7-a-side football leagues, kids coaching sessions, kids holiday camps, bubble football and free function hire.



## Churches

<b>St. Andrews Church</b>	
<b>Contact:</b> 01241 431135 office@arbroathstandrews.org.uk	<b>Location:</b> Hamilton Green, Arbroath
St. Andrews Church accommodates a range of groups and clubs in the area including exercise classes, Arbroath Stamp club and scout and guide groups. They run a crèche on Sundays and a youth group on Sunday evenings. Based on interviews, it is gathered that they have a key holder policy for some groups that use their facilities. The Church was recently underwent a £600,000 refurbishment.	
<b>St Thomas of Canterbury Church</b>	
<b>Contact:</b> kevinjamesgolden@hotmail.com	<b>Location:</b> Dishlandtown Street, Arbroath
The Church is a Roman Catholic Church. It has a Sunday service and mass throughout the week. The website does not mention any particular community activities or facility usage beyond church services.	
<b>St. Mary's Church</b>	
<b>Contact:</b> 01241 873 392	<b>Location:</b> Springfield Terrace, Arbroath
The Church holds services on Sundays and throughout the week. They host a Sunday school, but no other activities are specifically listed on the website other than a couple one off events.	
<b>Life Church Arbroath</b>	
<b>Contact:</b> Facebook - Life Church Arbroath	<b>Location:</b> James Street, Arbroath
Very little information can be found about activities at Life Church Arbroath. The Church does not appear to have an official website, but has an active Facebook page.	
<b>St. Vigeans Church</b>	
<b>Contact:</b> 01241 879567 knoxstvigeans@gmail.com	<b>Location:</b> St. Vigeans, Arbroath
St. Vigeans Church is linked with Knox's Church. St. Vigeans Hall is available for hire for meetings and/or events. A week long holiday camp is also run at the Church hall during the summer each year. Groups and activities that take place at St. Vigeans Church or at the Manse are listed below. Some groups meet in other areas of town including the Manse, which is also noted below.	
<ul style="list-style-type: none"> <li>• Arbroath Piano Club – non-church group that meets at the church on Sundays at 3pm</li> <li>• Birling Bairns – Scottish Country Dancing for Toddlers and pre-school children with their carers – Meet Tuesdays at 2pm in St. Vigeans Hall</li> <li>• Bookbug – Stories, songs and rhymes for toddlers/pre-schoolers – non-church organisation that meets in St. Vigeans Hall on Tuesdays 9:30-10:30am during term time.</li> <li>• Choir – Practice on Sundays at 10:30 before the Sunday Service</li> <li>• Fun Club – Formerly the Sunday School. The club meets in the Church on Sundays at 11:30am</li> <li>• The Guild – Meets on the third Monday of the month Sep – Apr. in St. Vigeans Hall.</li> </ul>	



- St. Vigeans Men's Club – The men's club is a non-church organisation that meets on Tuesday nights from 7:30 – 9:30pm Sep – Apr. to play games such as carpet bowls, darts and dominos.
- Messy Church – Crafts and music group which meets on the third Saturday of every other month at St. Vigeans Church
- Pizza & Pals – A meeting for young adults to get together and discuss the things that are important to them. The group meets on the fourth Sunday of the month at 7:30pm in the Manse
- Scottish Country Dancing – Meets on the first and fourth Monday of the month from Sep – Apr. at 7:30pm in St. Vigeans Hall.
- Strollers – A walking group that meets at St. Vigeans Hall and goes on a nature walk one Saturday a month.
- SWRI – A non-church organisation that meets in St. Vigeans Hall the second Monday of the month Sep – Apr. at 7:30pm
- Word & Wine – A group that meets in the Manse the second Wednesday of each month at 7:45pm to discuss thoughts on faith and worship over a glass of wine.
- Youth Club – The youth club meets on Wednesdays at 6:30pm and entry is 50p.

#### Knox's Church

Contact: 01241 879567

Location: Arbroath

knoxstvigeans@gmail.com

Knox's Church is linked with St. Vigeans Church. The following are groups and activities run at Knox's Church, though they cater to both church members.

- Beer and Bible Group – meet at the Corner Bar across from Knox's Church on the first Thursday of the month Sep – Apr.
- Knox's Coffee Afternoon – in the Church hall on Fridays 1:30-3pm
- Knox's Knit n' Natter – Charity knitting group that meets once a fortnight on a Tuesday in the church hall from 7-8:30pm
- Toddlers – A toddlers group with St. Vigeans and Knox's Church, which meets in Knox's Hall Wednesdays from 9:15 – 11:30am and Thursdays 9:15 – 11:30am and 11:30 – 1:30pm.
- Wednesday Club – This club is aimed at more senior members of the congregation and wider community, and provides the opportunity for good company and a chat. The group meets in Knox's Church Hall on Wednesdays at 2pm.

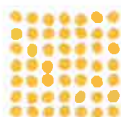
#### Arbroath West Kirk Church

Contact: N/A (online contact form only)

Location: Keptie St., Arbroath

The following are groups and activities that take place at Arbroath West Kirk Church:

- Choir – The choir meets to practice either before or after Sunday service each week.
- Sunday School – Meets each Sunday at 11am. They are three age groups: Nursery – 3-5 year olds; Junior – 5-8 year olds; Senior – 8-11 year olds. During each term the children take part in a family service and other activities such as picnics, Christmas parties or a Church Fayre.
- Creche – Creche is provided for children from the age of a few weeks to 3 years old. However, this is only offered during Sunday service hours.



- Faith finders – An informal group of 11-14 year olds who meet at 11am on Sundays during school term to discuss their faith.
- The Guild – Meets fortnightly on Mondays at 7:30 pm in the large hall.
- Tuesday Club – Afternoon senior citizens group that meets October to March on Tuesdays in the large hall at 2:30pm. One week per month they have a games and craft afternoon.
- Ladies Bowling – Group meets during the winter months on Wednesdays at 10am
- Scottish Country Dance – Group meets in the small hall during the winter months on Wednesday evenings at 7:30 - 9:30pm
- Bible Study group – Meets in the church lounge on Wednesdays from 7:30 – 9pm
- Junior and Senior Youth Club – On Thursdays the youth clubs use up all of the hall accommodation. The junior youth club is for ages 7 – 11/12 years and meets from 6 – 7:30pm. The senior youth club is for secondary school pupils and meets from 7:30 – 9pm. The clubs meet throughout the year from September to Easter time. Some activities they take part in include indoor football, table tennis, snooker, board games, knitting or card making etc.
- Prayer group – Meets once a month in the Lounge 7:30 – 8:30pm
- Coffee Stop – A drop-in facility on Friday mornings from 10 – noon in the large hall.

#### Old and Abbey Parish Church

**Contact:** 01241 877068 (church administrator)

**Location:** West Abbey St., Arbroath

[church.office@old-and-abbey-church.org.uk](mailto:church.office@old-and-abbey-church.org.uk)

Groups and activities that are run at the church are listed below. However, it is important to note that this information gathered from the website may not be fully up to date. Information on certain groups appears to have not been updated since 2011/2012.

- Sunday School – Meets on Sundays at 10:30am and is for children aged 3+.
- Youth Group – The youth group is comprised of around 19 teenagers, most of whom are non-church members. The group meets on Sunday evenings in the Church Hall from 6:30-8:30pm and participates in a range of organised activities outside of Arbroath as well.
- The Guild – No mention of when the group meets.
- Girl's Brigade – Meets Thursday evenings at the Church.
- Boy's Brigade – Meets Friday evenings at the Church.
- Kidz Club – Kidz club is for P1s to P7s and meets on Saturdays from 10am-12pm. Cost is £1 per child.
- Bowling Club – Meets Wednesday evenings in the Large Church Hall from 7:30-9pm.
- Book Group – Meets monthly on a Sunday at 9:45am in the Session Room.

#### St. John's Methodist Church

**Contact:** 01674 672373

**Location:** Ponderlaw St., Arbroath

An official website for the Arbroath Church with information on groups and activities could not be found.



Health and Wellbeing

<b>Arbroath COPD Group</b>	
<b>Contact:</b> Chest, Heart and Stroke Scotland <b>Location:</b> Arbroath Infirmary, DD11 2AT	
Open to anyone living with chess illness and their partners. Activities include gentle exercise to music and chat over a cuppa. Friday from 1.30pm-3.30pm (two-weekly)	
<b>Multiple Sclerosis Angus Branch</b>	
<b>Contact:</b> 0845 9005760 ina.mcbeath@btinternet.com	<b>Location:</b> Angus
Run by volunteers with the aim of giving help, support and friendship to people in the Angus area who have MS. We also offer help and assistance to others affected by MS such as friends, family and carers of people with MS.	
<b>Community Food and Health</b>	
<b>Contact:</b> Georgie Evans 01382 305713 / gevens@supportinmindscotland.org.uk	<b>Location:</b> 60 High Street
Provides cookery classes for adults and runs a food co-op for low income households.	
<b>Support in Mind</b>	
<b>Contact:</b> 01241 878664	<b>Location:</b> 16 Bruce Road
<ul style="list-style-type: none"> <li>• Individual support</li> <li>• Home visits</li> <li>• Telephone support</li> <li>• Support via email</li> <li>• Emotional Support</li> <li>• A range of information and advice</li> <li>• Access to local peer support groups</li> <li>• Professional guest speakers on mental health topics</li> <li>• Signposting to other relevant services</li> </ul>	

Services

<b>Angus Housing Association</b>	
<b>Contact:</b> 0845 177 2244 admin@aha.org.uk	<b>Location:</b> High Street, Arbroath
Housing co-operative. Provider of quality, affordable housing for rent.	
<b>Angus Agricultural Association</b>	
<b>Contact:</b> Joan Keith 01356 624430 joan@scottsacre.freestate.co.uk	<b>Location:</b> Clerk Street, Brechin
Meets second Tuesday of each month to organise the Angus Show.	



### Angus Women's Aid

**Contact:** 01241 439437      **Location:** Not stated

- Provide safe temporary accommodation for women and their children fleeing domestic abuse.
- Provide practical and emotional support to women and children living in Angus who are or have experienced any type of gender based violence.
- Provide training on gender based violence issues.

### *Employability/ Training Groups*

#### DEAP

**Contact:** Showcase the Street Charity      **Location:** 12 Keptie Street / 12A Millgate Loan  
01241 877805 / deaps2@deap.co.uk

- Employability Fund
- ILA – Arbroath
- Steps to Success Project
- Training Opportunities for 16-24 year old
- Work Able Scotland

They reimburse travel expenses for people traveling from outside Arbroath, and provide hot beverages.

Drop in anytime Monday to Friday, 9 – 4:30pm

### *Leisure, Crafts and Social Clubs*

#### Carnoustie Musical Society

**Contact:** Mr Roger Brunton      **Location:** Comrie Hall, Carnoustie  
roger@bruntondesign.com

**Aims:** To present musical productions, and support community activity in Carnoustie.

**Other Info:** CMS currently produces an annual main show in March, usually staged in Carnoustie High School theatre

#### Carnoustie Recorded Music Circle

**Contact:** 01241 853017      **Location:** Newton Hall, Carnoustie  
johncaidment@msn.com

Friday evening meeting, once a month from 7.30pm to 9.30pm.

**Aims:** To enhance members' knowledge and enjoyment of classical music through musically illustrated talks

#### Forfar and District Historical Society



<b>Contact:</b> Aileen Elliott <b>Location:</b> East and Old Parish Church Hall, Forfar forfaranddistricthistorical@gmail.com
<b>Aims:</b> To further interest in the local historical heritage First Thursday of the month, October to May, at 7.30pm (Except January).
<b>Tayside Folk Dance and Music</b> <b>Contact:</b> George Mitchelson <b>Location:</b> Monifieth 01382 532058 / admin@tayfolk.com
<b>Aims:</b> To learn and teach traditional folk dance routine. To take part in displays and to participate in international folk dancing festivals.

## 2.11 Specific Case Study : Stonehaven Sherriff's Court

### *Introduction*

Stonehaven Town Partnership is a SCIO and has approximately 50 member organisations. The project team for the Court building consists of 3 Trustees of STP together with STP's Project Development Officer. The team has sought professional advice from a number of sources including:

- The Princes Regeneration Trust
- The Architectural Heritage Foundation
- The Heritage Place
- The Consultation Institute

It is supplemented by a local architect's practice and a local accountancy firm.

### *The Building and Planned Usage*

The key sections of the court house include 11 spacious rooms located at the front of the building, Court Room No. 1 (which is still set out as a courtroom) and a number of small and low-ceilinged rooms located on the ground floor at the rear of the building.

The STP has set out in their most recent draft business plan (January 2016) that for the 11 front rooms, the group will have one major tenant that takes a number of the rooms and the rest can be let out on a flexible basis. It was felt that it would be unlikely to find a tenant that would commit to a 10 year lease or longer and it was equally unlikely to find numerous small tenants that would commit.

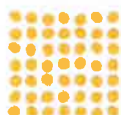
The Court Room No 1 is a large room (about 108 sq. m.) much of whose contents and decoration is listed. There are some smaller rooms (the Jury Room and the Sherriff's chambers) which could be considered 'en-suite' with the Court Room. The best option for this space is to leave it more or less as is and use it for a range of activities including mock trials for educational purposes, debates, committee meetings, tribunal/inquiry hearings, weddings, cinema, and conference facility or as a film set. This option is seen to provide the most substantial amount of potential income without being dependant on a single income source.

Three former jail cells and two record rooms located at the rear of the building are to be refurbished to a reasonable standard and offer them without any further fixtures and fittings for a range of uses and then see what offers come forth. The downside to this is it restricts any overall branding for the building.

### *Market Research*

The group has received letters of intention from four anchor tenants which include:

- Citizens Advice Bureau





- Aberdeenshire Voluntary Action
- PAMIS
- Kincardine Development Partnership

The rental value for the front rooms are seen to be £15 per sq. ft. per annum.

#### Governance

At present, the group favours the option to be a Company Limited by Guarantee wholly owned by Stonehaven Town Partnership. However, the group intends to seek professional advice on this before making a final decision.

#### Funding and Current Status

According to the most recent available meeting notes from late January 2016, STP had started at that time the process to obtain funding, which would need to be a minimum of £200,000 to cover all necessary professional advice and preparations. Funding streams being explored are Aberdeenshire Council's LEADER Fund, Architectural Heritage Fund, Pilgrims Trust, Robertson's Trust, Growing Community Assets, Big Lottery and Garfield Weston.

At the time of these notes, STP intended to make an offer on the building and continue work to make the business plan more robust.

## 2.12 Other Case Studies

Case Study: Maryhill Burgh Halls

<b>Address</b>	10-24 Gairbraid Avenue, Glasgow, G20 8YE
<b>Website</b>	<a href="http://www.maryhillburghhalls.org.uk/#home1">http://www.maryhillburghhalls.org.uk/#home1</a>
<b>Email</b>	<a href="mailto:info@mbht.org.uk">info@mbht.org.uk</a>
<b>Telephone</b>	0845 860 1891

#### Overview

The Burgh hall was formally opened in 1878 as a result of the lawlessness created in the town of Maryhill due to the rapid growth in population. The plans for the building were to include police accommodation, a court room, and a public hall suitable to seat 900 people. In the present day, the Maryhill Burgh Halls Trust is a community led organisation that was set up with the purpose of the refurbishment of the Burgh Halls and its long term management. The aim was to bring the Halls back to the heart of the Maryhill community. The complex consisting of Maryhill Baths, Maryhill Burgh Halls, Maryhill Fire Station, and Maryhill Police Station was sold by Glasgow City Council to the Burgh Halls Trust. The Trust developed the building through refurbishment, selective demolition, and new build that offers facilities for the local community, businesses, third sector and social economy and community organisations. This refurbishment also brought the building back into the public arena after numerous years of being little used. It has also been aimed to be supported by commercial activity to ensure its viability.

The Burgh Halls started in November 2009 and the building officially opened in 2012.

#### Vision

Our overall vision is to bring Maryhill Burgh Halls back into the heart of the community of Maryhill, to ensure it once more becomes a focal point for local community activity and pride.

#### Aims



- To provide accommodation to enable the development of local services
- To provide a focus in the centre of the community for community activity and celebration
- To encourage increased levels of community participation in local activities, including the management of the Halls.
- To complement other regeneration activity in the area.
- Through activities based in the centre to help to increase confidence amongst young people and adults
- Through increased access to learning and personal development, to help to increase skills levels locally
- To engender an increased sense of local history and heritage amongst local residents
- To increase awareness of Maryhill and its history outside the area
- To contribute to building a sense of pride in the area.
- To ensure that the building is well maintained and the focus it provides is financially sustainable.
- To provide accommodation to enable the development of local services
- To provide a focus in the centre of the community for community activity and celebration
- To encourage increased levels of community participation in local activities, including the management of the Halls.
- To complement other regeneration activity in the area.
- Through activities based in the centre to help to increase confidence amongst young people and adults
- Through increased access to learning and personal development, to help to increase skills levels locally
- To engender an increased sense of local history and heritage amongst local residents
- To increase awareness of Maryhill and its history outside the area
- To contribute to building a sense of pride in the area.
- To ensure that the building is well maintained and the focus it provides is financially sustainable.

#### Operating Area

Maryhill Burgh Halls is located in the north west of Glasgow at the corner of Maryhill Road and Gairbraid Avenue.

#### Legal Structure

Maryhill Burgh Halls Trust owns and manages Burgh Halls. They are a registered Charity and Company Limited by Guarantee.

#### Beneficiaries

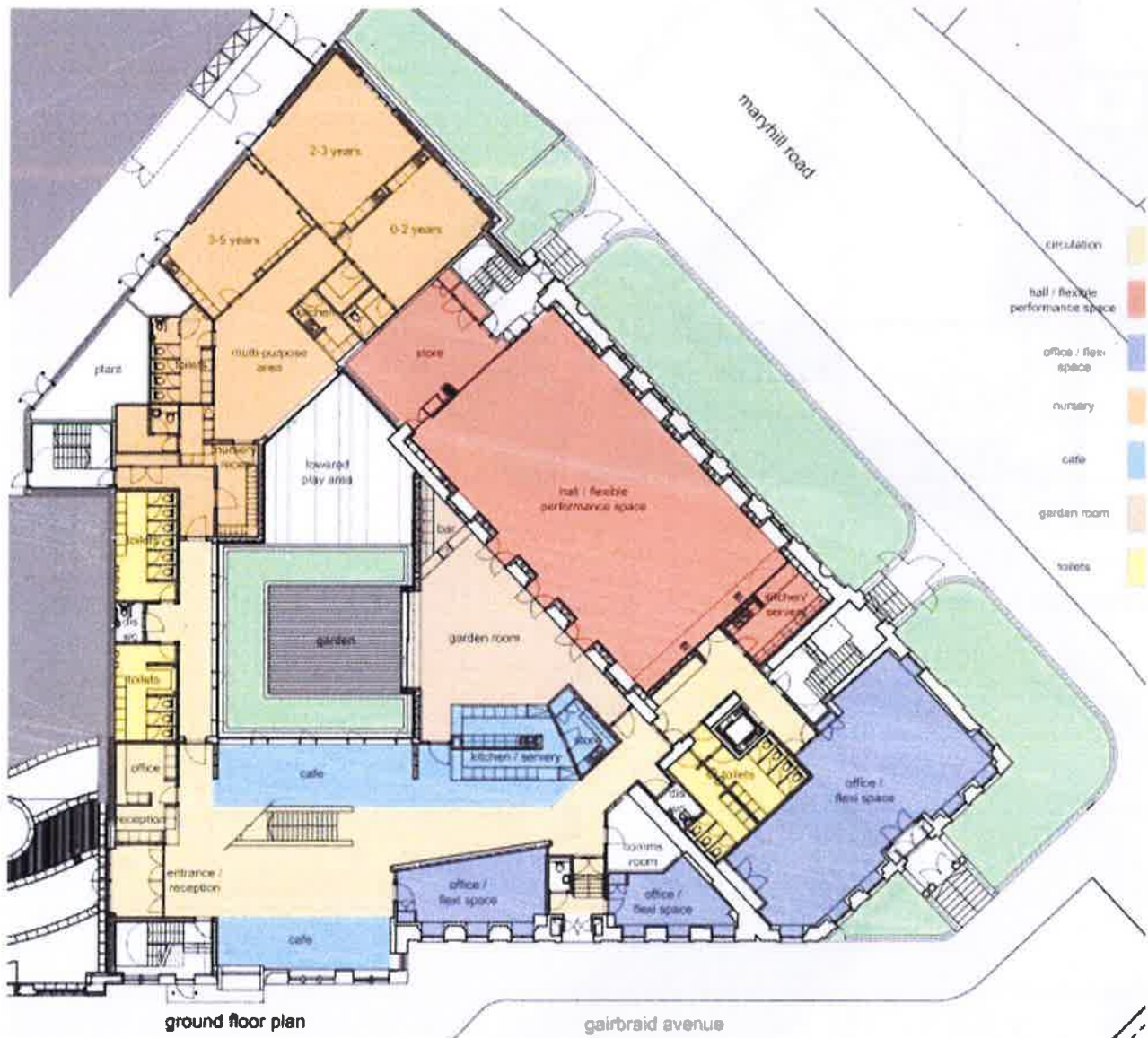
The community members, businesses, third sector, and public sector organisations local to the North Glasgow area are all beneficiaries of the Burgh Halls.



## Premises

The building will offer some 14,500sq ft (1,350 sq m) of directly lettable business space in up to 13 discrete units. In addition, the refurbishment of the Burgh Halls was complementary to the redevelopment of the adjacent buildings (the former Baths and Fire Station) by Glasgow City Council to form a local community sports and leisure centre.

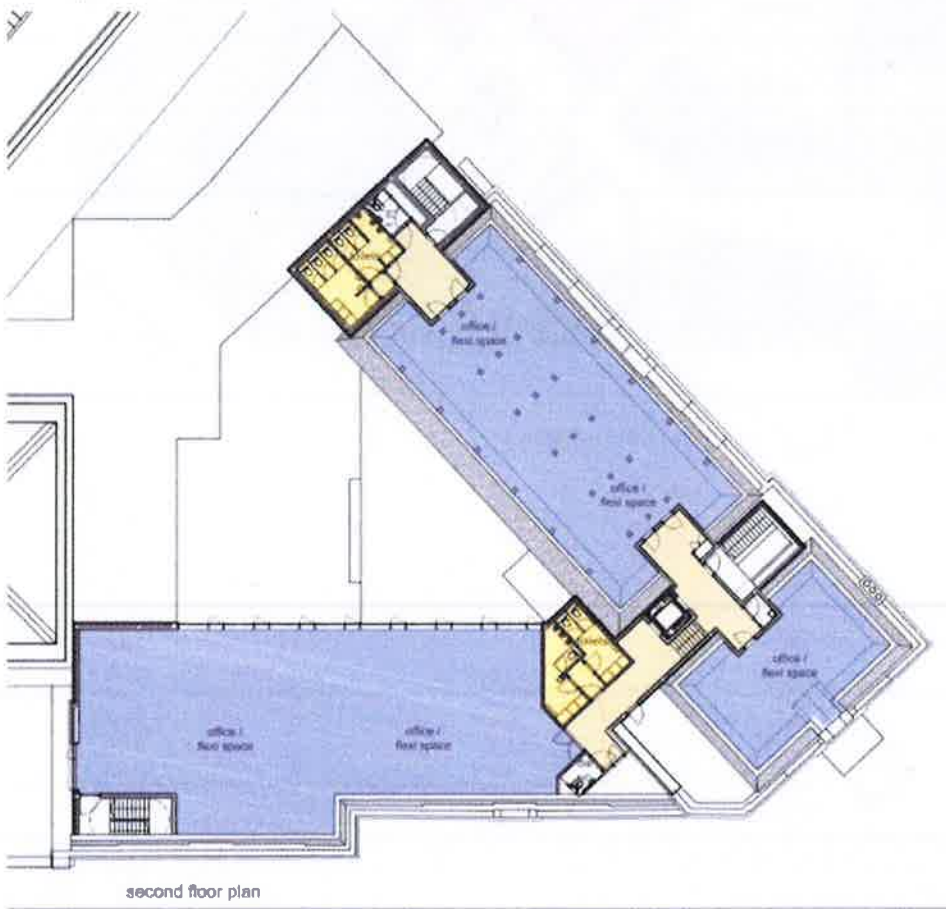
### Ground Floor:



First Floor:



Second Floor:



## Staffing and Volunteers

The Board of the Trust is made up of people living or working in the Maryhill area. There is one permanent fixed-term staff member at the Halls.

The Burgh Halls openly accepts and encourages volunteers for all aspects that take place in the facilities. They are looking for volunteers now and encourage people in the local community offer any time they are able to give from a few hours a month to a few days a week.

## Services and Activities

The key services and activities at the Maryhill Burgh Halls are encompassed by Hall & Events Space, Café, Business Space, Studios, and Heritage.

### *Hall and Events Space*

- Main Hall – Centrepiece of the building with features dating back to 1878. Available for weddings, conferences, dinners, training seminars, workshops, theatre performances, dance classes. It holds up to 210 theatre style and 120 dinner style.
- Garden Room – Space adjoins with the Main hall and can be hired as a breakout space or servery area. It can also be hired separately as a medium – sized meeting or conference space.
- Meeting Room – Small meeting room located above the main hall, ideal for a small meeting, group, or presentation.
- Outdoor Courtyard – Accessed through the Garden room, can be used as a space to get fresh air during a meeting or can be hired for an outdoor event. Capacity of the courtyard is around 45.

### *Café and Catering*

- Located at the entrance foyer to the Burgh Halls. Currently under refurbishment.
- Event catering can be booked for events held inside Burgh Halls from a number of specialist providers.

### *Business Space*

- A business centre within the Halls features 11 office units which range in size.
- Hot-desk space for short term leases are available with a café and nursery on site.

### *Studios*

- Burgh Halls has a commercial recording studio and linked to it a youth and community music studio and rehearsal space.

### *Nursery*

- The Trust offers nursery provision by letting the premises to specialist providers.

### *Heritage*

- Three walking trails have been created which outline the heritage of the Maryhill area.
- As part of a guided tour, Maryhill Burgh Halls Trust runs free versions of the walks during the summer months. They also do the walk for Doors Open Days in September, and the West End Festival in June, and at other times of year for groups by appointment.



- There is a gallery for artefacts in which historical stained glass panels were placed for local people and tourists to view local heritage.

## Finances and Funding

### Capital costs

The overall development cost of the project was around £9.6m with capital works costing £6.7m. There was a £1.5 m spent on advanced works and other development costs.

### The Main funding sources for development:

Scottish Government City Growth Fund Phases 1 and 2 - £1.26m

The Heritage Lottery Fund - £1.16m

Big Lottery (Growing Community Assets) - £980,910

The European Regional Development Fund (ERDF) - £1.327m

Glasgow City Council Better Glasgow Fund – £1.02m

Glasgow City Council Vacant and Derelict Land Fund - £675,000

Scottish Government Town Centre Regeneration Fund - £1.8m

Historic Scotland - £500,000

Scottish Government Wider Role Fund - £764,000

Robertson Trust - £28,000

### Case Study: Community Central Hall

<b>Address</b>	292 - 316 Maryhill Road, Glasgow, G20 7YE
<b>Website</b>	<a href="http://centralhall.org/">http://centralhall.org/</a>
<b>Email</b>	<a href="mailto:enquiries@centralhalls.org">enquiries@centralhalls.org</a>
<b>Telephone</b>	0141 331 7676

#### Overview

Community Central Hall is the name of both the limited company development trust and the building. It was built in 1924 as the Central Methodist Hall and was later refurbished in 1966, still acting as a Church at that time. In 1976 the building was forced to close, but was already being used by numerous community and voluntary groups. As such, the community campaigned to the Strathclyde Regional Council to buy the building for community use, which it did in 1977 and the building has operated since then as a community managed centre. Services within the facility continued to develop and as they did the organisation gained more and more space, including a nursery, after school service, day care centre, café, etc. as well as numerous community projects and initiatives that helped regenerate the Maryhill corridor. The first Chief Executive was appointed in 2005 and it was decided after a strategic review to change the organisation into a Development Trust. In 2008 the building was chosen as the venue for the first joint Scottish/UK Public Inquiry, and with support from the Scottish Court Service received a £360,000 refurbishment. In 2009 the Board of Directors formally committed to seeking



outright ownership of the building to secure long term development and refurbishment, and protect the building for future generations.

#### Operating Area

Community Central Hall is located in Glasgow on Maryhill Road. It is very central, being only about 2 miles north of Glasgow Queen Street Rail Station.

#### Legal Structure

CCH is a company limited by guarantee and is a registered Scottish charity. It has about 25 organisational members including local churches, community organisations and trusts, Community Council, and user groups.

#### Beneficiaries

CCH's services are for the benefit of all people of the local community and in particular for those who may face social exclusion including at risk young people, people with disabilities, BME, asylum seekers, refugees, etc.

#### Premises

CCH was built in 1924 and is a 22,000 sq. ft. building with a grade "C" listing. The building maintains 7 halls/meeting rooms that can hold from 10 up to 450 people.



#### Staffing

CCH has a board of voluntary directors and key management staff include: Chief Executive, Childcare Services Manager, Care and Recreational Services Manager, and Development Services Manager.

#### Services and Activities

CCH provides a range of services. It is a central point for clubs and classes hosted by community and voluntary groups. Below is an outline of the core services and activities that take place in the hall:

##### *Happy Days Community Nursery*

- A Care Commission registered nursery centre for under 2's and 3-5 year olds, which was established in 1991 to meet the needs of local people for a low cost community nursery. This project is within CCH with a voluntary board of directors.
- Funding was searched for by a steering group of local people and BBC Children in Need funded the project for the first 2 years. Additional funding was secured from the Childcare Strategy Fund in 2001. The nursery also has a partnership with Glasgow City Council.



- Opening hours are Mon-Fri 8:30 – 6:00 and prices vary range from £10.60 to £27 per day dependent on number of hours and age.

#### *Safe 'til Six Out of School Care*

- After school care programme for 5-14 year olds that was set up by local parents in 1977.
- Registered with the Care Commission and managed by a group of voluntary boards. The programme is open Mon-Fri from 3:00 – 6:00 and 8:30 – 6:00 during school holidays. Weekly prices range from £45 to £120 depending on number of children and whether the children attend only during term time or for the full year. Monthly payment options are also available.

#### *Young People's Services:*

- Breakthrough – A youth project established in 1995. The project works with young people aged 11 – 25 years who are socially excluded and offer them opportunities. They target young people who have offended or who display challenging behaviour.
- Prince's Trust Courses – This is a 12 week course aimed at 16 – 25 year olds in the community. Participants have the opportunity to earn nationally recognised qualifications including: John Muir Award, Community Sports Leadership, Basic Food Hygiene, First Aid, Key skills in Problem Solving, Improving Own Learning & Working with Others.
- Woodlands / BME Work – Woodlands Youth Initiative works with young people aged 11 – 25 years. The project aims to promote social inclusion of young people including BME, asylum seekers and refugees in the north and west of Glasgow.

#### *Care Assessment for the Elderly (C.A.S.E): Information on all elderly services are being updated.*

- Day Care for 50+
- Home Care / Helpers
- Community Care Scheme
- Nifty Fifty's

#### *PAT Testing*

- CCH offers competitive rates for employers, employees, and self-employed for electrical testing under the Electricity at Work Regulations.

#### *Community Transport Scheme*

- In partnership with Community Transport Glasgow, CCH offers a van hiring service as well as MIDAS certificate training.

#### *Footprint – Copy*

- Professional print and copy solutions for businesses.

#### *Café Central*

- A social enterprise café in CCH run by CCH staff and volunteers. The café also offers catering services.

#### *Maryhill Climate Challenge*

- A community led project to actively reduce carbon emissions in the North West of Glasgow. The project has worked with the community to build a garden, do complete Home Energy Checks,





and provide free draught-proofing. They also host food growing, cookery and energy efficiency classes.

#### *Classes and Clubs/Groups*

- Classes are also hosted at CCH including Zumba, Hong Wo Tai Chi, Martial Arts, Ballroom Dancing, etc.
- Clubs/Groups that meet at the hall include Narcotics Anonymous, Alcoholics Anonymous, Gamblers Anonymous, Blind Club, Monday Club (8-12 year olds), etc.

#### *Hall Hire*

- CCH has a range of facilities available for hire, all within a Grade C listed building.

#### *Councillors Surgeries*

- Two councillors and one MSP are available at the hall once a month.

#### *Volunteers*

People from the local community are encouraged to volunteer with a range of services offered at CCH including in Baby Nursery Care, Pre-Nursery Care, After School Care, Out-of-School Care, Youth Clubs, Elderly Day Care, Care at Home, Community Befriending, and Café & Catering. All volunteers are subject to Enhanced Disclosures and are given the relevant training. CCH also offers out of pocket expenses for volunteers.

#### *Finances*

According to OSCR, in 2013 CCH's income was £1,329, 285 and expenditure was £1,323, 272. As can be gathered from the summary of services on the website, key revenue appears to come from the café/catering, hall hire, Footprint Copy and presumably from the various user groups.

#### *Funding*

The various projects and community businesses held within CCH have received funding from a variety of sources that are specific to their purpose. Some of these funding streams have been through Children in Need, the Climate Challenge Fund, etc.

For continuous fundraising for the hall, CCH has the *200 Club*, which is their own lottery drawn every month for £4 a ticket. Each month there are 3 prizes ranging from £20-£150 depending on the number of participants.

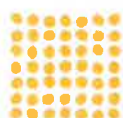
#### **Case Study: Orbiston Neighbourhood Centre**

<b>Address</b>	Busby Road, Bellshill, ML4 2BW
<b>Website</b>	<a href="http://www.oncbellshill.org/">http://www.oncbellshill.org/</a>
<b>Email</b>	<a href="mailto:info@oncbellshill.org">info@oncbellshill.org</a>
<b>Telephone</b>	01698 842215

#### *Overview*

Utheo Ltd. is the legal body responsible for the management of the Orbiston Neighbourhood Centre. The company was established in 1993 by a group of local people from two Church of Scotland congregations. Utheo opened the Orbiston Neighbourhood Centre in 1995 to provide a base for services and initiatives seeking to address problems of social exclusion and deprivation in the Bellshill community.

The voluntary board continues to be made up of church nominated directors.



## **Vision**

*"to bring together the people of Orbiston and Bellshill to combat poverty, isolation and intolerance"*

## **Operating Area**

The centre's operating area includes Bellshill and Orbiston in North Lanarkshire.

## **Legal Structure**

Uttheo Ltd. is a registered Charitable Company limited by Guarantee.

Registered Co. No. 14554 and Scottish Charity No. SC021687

## **Beneficiaries**

The centre was established for the benefit of all people living in Bellshill and Orbiston.

## **Premises**

The Centre shares a site with Orbiston Parish Church and is located 700 metres from the Bellshill train station making it accessible by train from Edinburgh and Glasgow. There are also two bus stops near the centre with frequent bus services. Additionally the site has a car park.

## **Services and Activities**

### **Befriending**

BeFriend in Bellshill supports elderly and/or disabled persons who are socially isolated, though not necessarily registered disabled, and living in Bellshill and the surrounding communities in North Lanarkshire. A team of experienced volunteer befrienders visit befriendees at home. They spend time together listening and talking and sharing relaxed activities. If appropriate befrienders help befriendees get out of the house to enjoy short trips or attend appointments. Visits normally take place weekly and last for a short time. Officer service hours are Monday to Friday from 9 – 4.

The project is free for service users and eligibility criteria include a referral and assessment procedures. It is a volunteer scheme funded by The Big Lottery and a Church of Scotland Parish Development Fund.

### **Day Service**

The Older Persons Service provides support for older people and their carers who live in Bellshill and surrounding areas. The service charges a small fee, which includes lunch, snacks, travel to and from the Centre and daily activities. Activities include games, quizzes, singing, musical entertainment, carpet bowls, arts and crafts, social events and day trips to encourage physical movement, intellectual stimulation and social interaction.

### **Childcare**

The centre offers Out of School Care and Holiday Play Schemes. The operating hours during term time are Monday to Friday from 8am-9am and 3pm-6pm. The playscheme hours are Monday to Friday 7:30am-6pm. Children are accepted from all Bellshill primary and high schools and walking and bus escorts are provided to and from schools.

They operate on school in-service days and run a Holiday Playscheme during the Easter, Summer and October school holidays which offers a daily programme of games and day trips.

Both services cater for children with special needs and fees are



## Youth Club

A weekly drop-in club for children and young people which runs during term time on Monday evenings from 6:30-830pm. The drop-in club is supported by Youthlink Scotland and the CashBack for Communities Youth Work Fund.

## Computer Learning

Digital Inclusion classes are held Mondays and Tuesdays from 10am-12pm; Work Club runs Wednesdays 10am-12pm; IT Skills drop in sessions are held Thursdays 10am-12pm in the IT suite; and IT skills classes for all levels are offered by appointment.

## Volunteering

The Centre offers volunteering opportunities for people aged 15+. They provide training and reimburse travel and lunch expenses. Volunteers can help with administration and clerical work, serve customers in the Food Store and Theo's Café, join in with activities in Childcare and Older Persons services and help computer learners. Those that work office hours or attend full-time education can volunteer by joining the board or getting involved in fundraising and promotions activities.

## Theo's Café

Theo's Café aims to improve the health and well-being of local people by providing healthy, nutritious and affordable foods. It is open Monday to Friday 8:30am-2:30pm. They serve breakfast through to afternoon tea and offer outside catering for local groups and organisations.

## Food Coop

The Orbiston Food Coop is run by volunteers who also provide an informal home delivery service to those unable to get to the Centre. The Food Coop is supported by Lanarkshire Community Food and Health Partnership to develop initiatives promoting access to a healthy diet and addressing issues of food poverty. The Coop currently helps deliver the Food Aid Programmes providing food and health support for families in crisis.

**Room Hire :** The Centre hires out rooms for local groups. Rooms and rates are as follows:

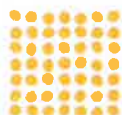
Room	Community	Commercial
Main Hall (capacity 150)	£10/hour	£15/hour
Theo's Café (capacity 40)	£8/hour	£10/hour
Computer Suite (capacity 10)	£10/hour	£15/hour
Centre Meeting Room (capacity 15)	£8/hour	£15/hour
'Hoose' Meeting Room 1 (capacity 15)	£8/hour	£15/hour
'Hoose' Meeting Room 2 (capacity 4)	£8/hour	£15/hour

## Other Services:

Other services and activities included in the Centre's timetable include fitness and exercise classes, dance classes, Daily worship, yoga classes, Men's Club etc.

## Opening Hours

The Centre is open Mondays to Fridays 7:30am to around 8 - 9pm and on Saturday mornings.



## 2.13 Arbroath Charrette

Angus Council commissioned a charrette in Arbroath during the month of February. The following are notes taken from one of the public consultation meeting held in the evening of 2 February. The meeting included local residents and Angus Council members from the Communities team and from Planning and an Arbroath Councillor.

### *Positive Aspects of Arbroath:*

- Fishing heritage
- Proud place
- Pride in heritage
- Arbroath is welcoming to people from anywhere
- Arbroath Golden/Royal mile links Abbey to the harbour – this is relatively unknown to a lot of local people now
- Arbroath is an interdependent town
- Arbroath has a long artistic heritage which is often overlooked – Hospitalfield is now central to that, but not the only thing

### *Challenges*

- There is a lack of understanding about local heritage. There is no mention of Scottish-historical figures from Arbroath
- Need to get people onto the High Street. People don't come to the High Street because the perception is that there is nothing there
- It is difficult to find the town centre for people who do not know the area
- High Street rents are too high for businesses
- The dual carriageway is a big issue – breaks the town into two with West Port on one side and the High Street on the other
- No hotel in the area for visitors to stay
- The local media is very negative. Seems to share negative stories and does not share positive ones
- Conservation of the back of buildings are a disaster

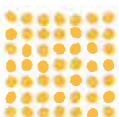
### *Ideas for Improvement*

- Put entertainment on the High Street e.g. dance, pipe bands to draw people there, help attract markets – good for the town and local businesses
- Improve visitor economy – tourism
- Sustain and grow present industries

## **Arbroath Charrette Feedback Session**

On the 18<sup>th</sup> of February, the Arbroath Charrette had a feedback session with two presentations held at 2pm and at 7pm. In cooperation with Angus Council and the charrette facilitators, we held a stall throughout the event to speak with local community members about the courthouse project. The following outlines some feedback gathered from that day.

Ideas from local individuals/Individuals working in Arbroath:



- Activity ideas from a local resident included meetings and keep fit classes – local resident would attend weekly and be willing to pay £5
- Dundee resident working in Arbroath – suggested offering space for mental health charities, keep fit classes and exploring opportunity for permanent tenants such as someone running their own yoga business or a chiropractor
- A local social worker has interest in using the hub as a meeting space for patient groups. It would be beneficial for them to have access to intranet for health and social work e.g. computer based programmes such as ALICE
- Another suggestion was for the courthouse to be a focal point for finding out about what else is going on in the area

#### Community group / organisation

- Friends of Keptie Pond – work to enhance the local pond. The group would be interested in using a meeting room in a community hub. They are currently based at Angus College and meet in the early evening. They would prefer a place where they could meet later in the evening from about 7:30 – 9:30pm.

#### Local Funder

- A member of the Royal Voluntary Service suggested that they have a potential funding opportunity for the courthouse project or for groups interested in using space in the new hub. It is a health and well-being fund for those over 50 years. The fund is fairly flexible and the catchment area falls around the courthouse where potential users of the hub would come from. In previous times, the fund has been used to pay rental costs for an AgeUK premises for a year.
- £70,000 is available from the fund this year and next year is unknown.

## 2.14 Arbroath Courthouse Open Meetings

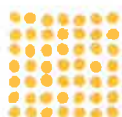
An open meeting was held in the Courthouse on 22<sup>nd</sup> May 2017, preceded by an informal drop-in session. 53 people came along to take a tour of the building (most had never been inside it before) and to hear about the plans for its future. Attendees included representatives from 18 local organisations and local politicians, as well as interested members of the public.

People were enthusiastic about the idea of opening up the building and making it an active part of the community and hearing about the work of the group.

There were a number of activities to gather ideas to feed into the development of the project.

### What would make Arbroath a better place to live?

- A place for the people of Arbroath to have as a place to go to
- More opportunities for people to get involved
- A community Facebook page showing cool things to check out in Arbroath
- More trees in the West Port Village area, the new “bohemian” quarter
- All shop fronts that are boarded up should be painted with local scenes
- A painted door trail, involving private houses and shops
- Rickshaw-type bikes from the main car parks to the town centre (new jobs)



- Free walking tours of Arbroath
- Flower displays and hanging baskets outside shops (mentioned twice)
- A cleaner High Street
- More independent shops
- More town events like a summer festival
- The Angus Show to return to Arbroath
- An attractive pedestrian area with flowers and plants (other towns do this)
- A community place to have activities for children and teens
- Art and music workshops and studio space
- Theatre space
- More tourism
- Seeing things happen to encourage the population

#### **What's good and already happening in Arbroath that could be built on?**

- Many hardworking groups and volunteers
- Crafters and small business set-ups
- Artistic, creative and visual artists who can put Arbroath on the map
- Good local hospital
- Good outdoor facility at Splash World
- Enthusiastic people
- Community spirit and a love for our town
- Lot of history and boxes and boxes of artefacts stored all over Angus
- People and enthusiasm to get things done; gives us hope
- Good natural resources e.g. farms and the sea with amazing food. We need to spread the word!!
- Lots and lots of efforts across the community to help to enhance the environment and viability of the town but it is not well co-ordinated, which leaves it sub-optimal
- Surrounded by so many beautiful physical features (a contrast with the High Street). It avoids mass tourism but Arbroath is well worth visiting so we need to tempt folks to the area.
- Beautiful buildings that need renovating or maintaining
- A growing Youth Council
- A railway station, good transport links and now a fast bus to Dundee
- A desire by the community to improve the town



## What would you like to see in a renovated Courthouse?

- A space where the history and artefacts that Arbroath has stored away can go on display in a rolling programme
- A re-enactment group putting on mock trials for visitors and locals, based on 18<sup>th</sup> and 19<sup>th</sup> century history
- A place to hold functions for groups. Affordability of rooms for volunteer groups is critical as other venues are free.
- Small function rooms
- A learning kitchen for people trying to learn to cook. This could be a pop-up restaurant in the evenings
- An internet café
- Small kitchens
- Band practice space
- A recording studio – audio and film/digital
- The Youth Council could possibly hold meetings in the building
- Youth open days with games and the like
- A community centre and rooms for community groups
- A Kids' Club
- Arts and crafts for all ages and skill levels
- Talks on lifeskills, financial advice and cooking lessons
- The Learning Tree Partnership bookshop and learning facility (see stakeholder interview)
- A meeting place for old folk to come and chat – or have speakers and demonstrations
- Workshops in basic household skills for older people. Many widowed women (and men) don't know how to change a plug or a light bulb or a leaking washer on a tap, or put up a curtain rail. Older people can show others how to do these things and make new social contacts.
- A café
- Art exhibitions
- Changing themed exhibitions – art, photos (old and new), etc.
- Sculpture studio and artists' spaces, plus exhibition and retail space for artists and crafters
- Store area for recyclable objects suitable for use in sculpture/art pieces and projects
- A creative writing room
- A dark room for photography (good use of a cell!)
- A room for people to come and get free tea and coffee (I'll fundraise and volunteer for that)
- General meeting place for all ages and backgrounds



- Gardening classes, growing flowers for displays in the town
- It would be a perfect opportunity to make the buildings into higher amenity flats, retaining the beautiful fixtures and fittings

Arbroath District Youth Council carried out a youth survey recently. This showed that there are four main issues that young people feel need to be addressed:

- Drugs and antisocial behaviour
- Nothing to do
- Poor infrastructure
- Litter and image





## 2.15 Poster to attract members

### Arbroath Courthouse Community Trust



# Help us bring the Courthouse to the community.

---

As part of the journey to gain ownership of the building, we need as many local people to become members so that this is your place that you have a real say in.

Being a member doesn't need a big time commitment, but it does mean you have a say in how the project develops. The more members we have, the stronger our case is to win this for the community.

---

#### To sign up or for further information contact:

Lynn -

[lynn@mackayboatbuilders.co.uk](mailto:lynn@mackayboatbuilders.co.uk)

Pamela -

[pamela@communityenterprise.co.uk](mailto:pamela@communityenterprise.co.uk)



# Arbroath Buildings Options Appraisal

---

## Introduction

As part of our research, a number of available buildings in Arbroath have been considered for their suitability to house our proposed services. Following is an options appraisal of those buildings which have been rated across five essential criteria. After an initial consideration, we have narrowed the list down to four options worth examining further as highlighted in the table below.

